

MARKET ACTIVITY REPORT

Winchester Center, CT 06094



Presented by
Steve Schappert | REALTOR® | GRI
Connecticut Real Estate License: REB.0791416



Work: (203) 994-3950 | Mobile: (203) 994-3950

Main: Broker@ctreb.com

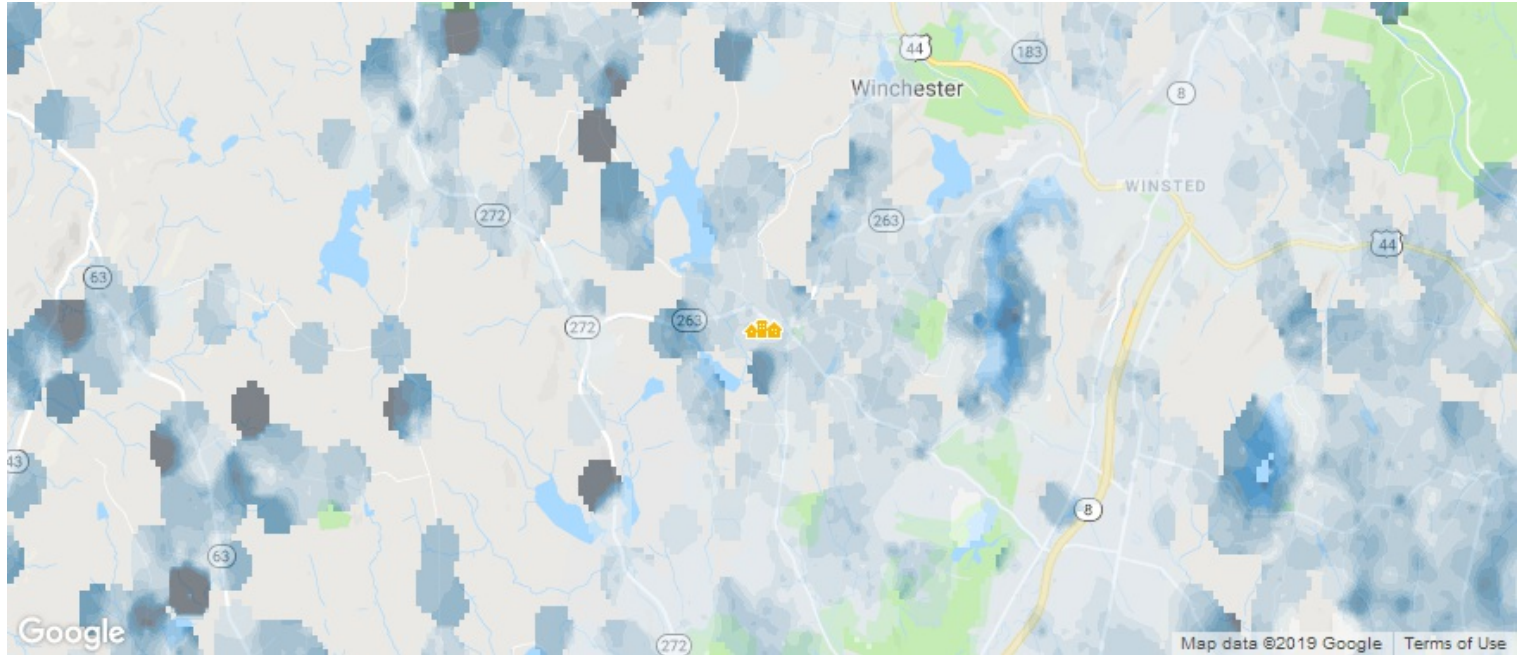
Office: <http://ConnecticutRealEstate.online>

Connecticut Real Estate

157 East Main Street 2nd Fl. Thomaston, CT
06787
Litchfield, CT 06759

Winchester Center, CT 06094

Market Snapshot: Estimated Home Values



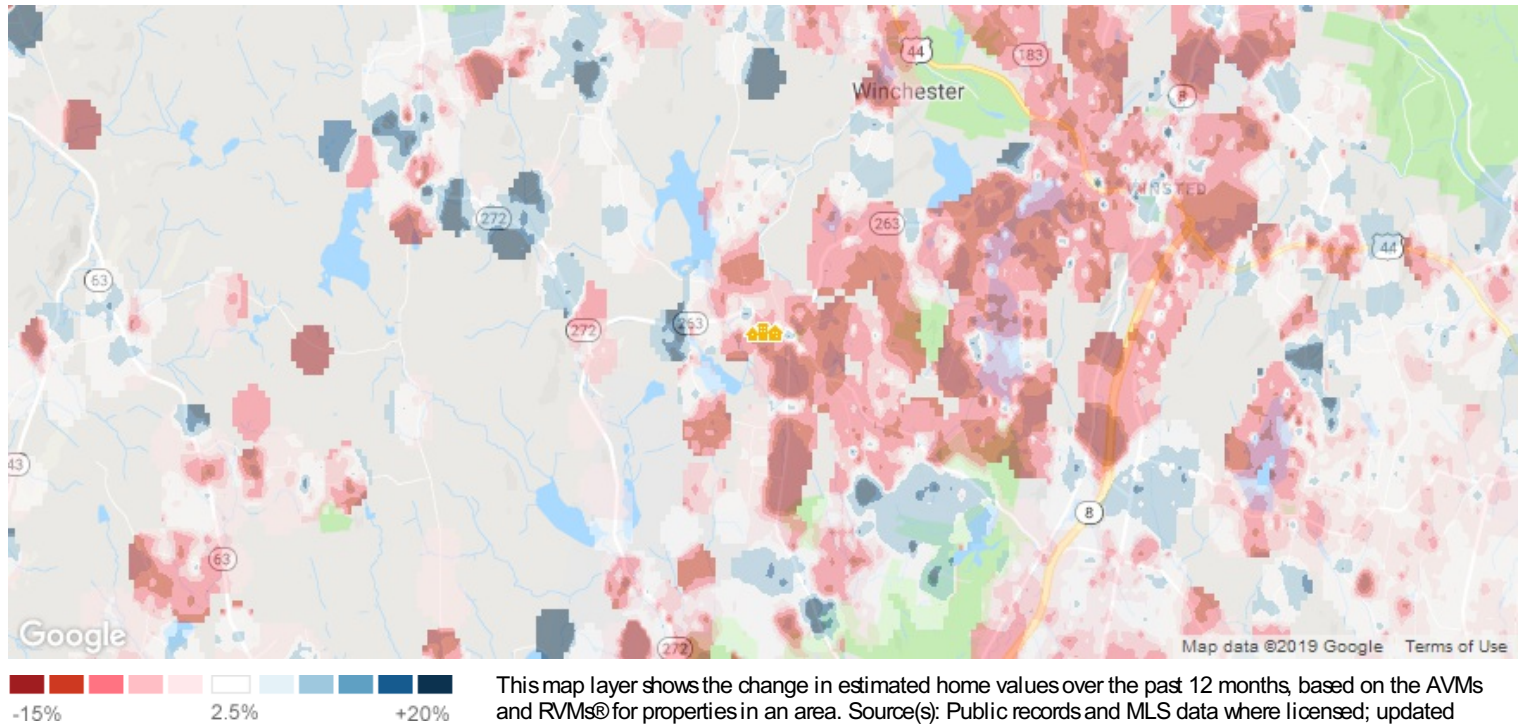
This map layer shows the average estimated home values, based on the AVMs and RVMs® for properties in an area. Source(s): Public records and MLS data where licensed; updated Quarterly.

Because some brokerages may choose not to include their MLS listing content within the RPR platform, the analysis contained in this report may not have been created using all the available listing data within this geographical market.

*About this Data: Estimated home values are generated by a valuation model and are not formal appraisals. Valuations are based on public records and MLS data where licensed. The metrics shown here reflect **All Residential Properties** data.*

Winchester Center, CT 06094

Market Snapshot: 12-Month Change in Estimated Value



*About this Data: Estimated home values are generated by a valuation model and are not formal appraisals. Valuations are based on public records and MLS data where licensed. The metrics shown here reflect **All Residential Properties** data.*

Winchester Center, CT 06094

Market Snapshot: Concentration of Distressed Properties



Total # of
Distressed Properties

0

Updated: 8/14/2019

of
Pre-Foreclosures

0

of
Foreclosures

0

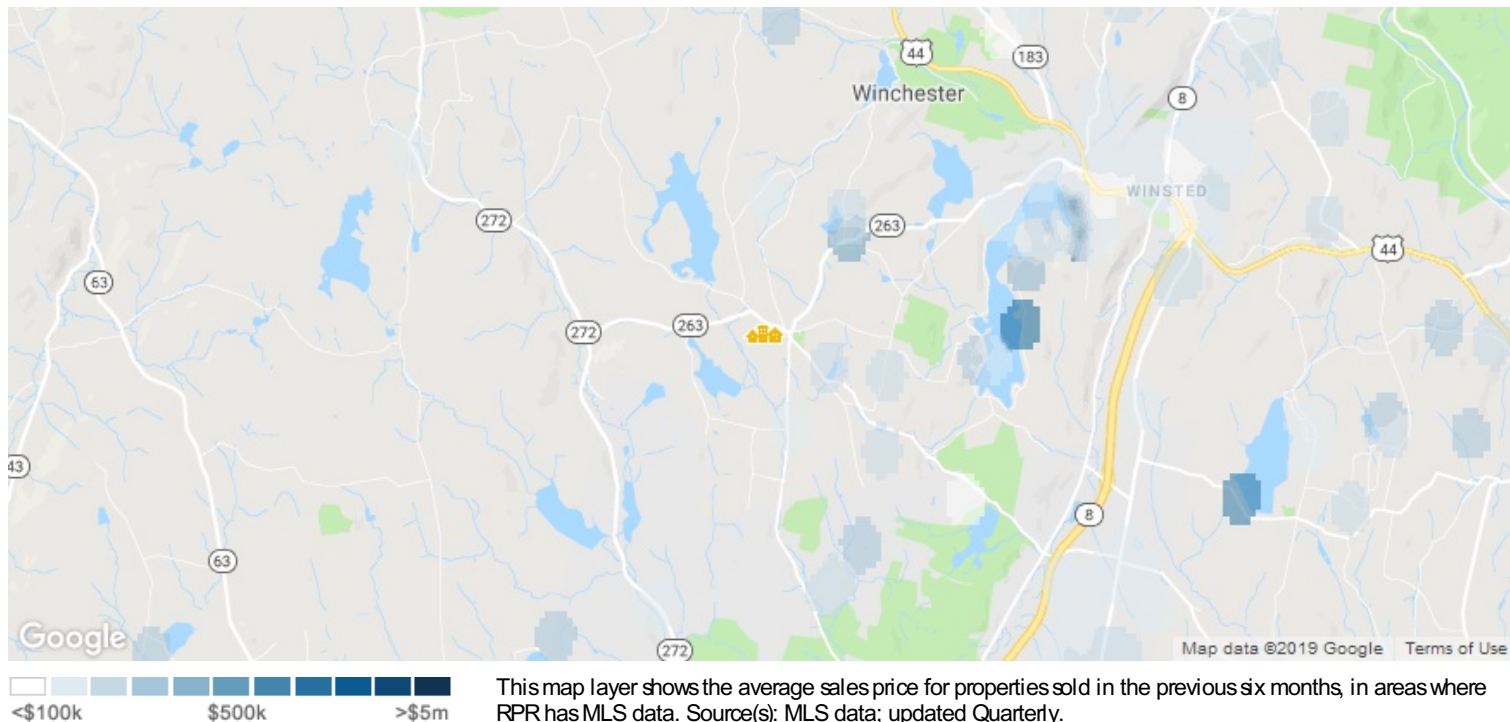
of
Short Sales

0

About this data: The metrics displayed here reflect distressed property counts (listings and public records) for **All Residential Properties** as of 8/14/2019.

Winchester Center, CT 06094

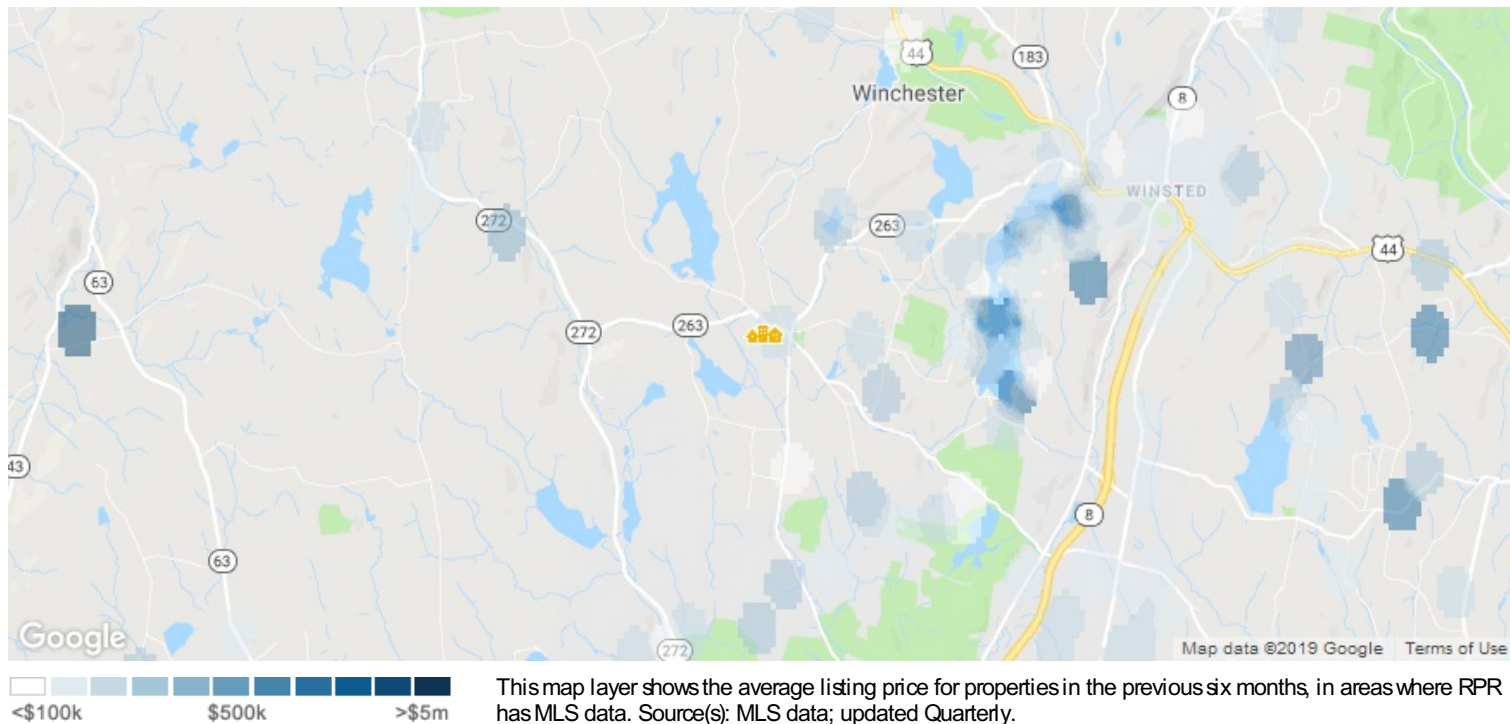
Market Snapshot: Sales Price



About this data: The Metrics displayed here reflect average sales price for **All Residential Properties** using **MLS listing** data.

Winchester Center, CT 06094

Market Snapshot: List Price



About this data: The Metrics displayed here reflect average sales price for **All Residential Properties** using **MLS listing** data.

About RPR (Realtors Property Resource)

- Realtors Property Resource® is a wholly owned subsidiary of the National Association REALTORS®.
- RPR offers comprehensive data – including a nationwide database of 164 million properties – as well as powerful analytics and dynamic reports exclusively for members of the NAR.
- RPR's focus is giving residential and commercial real estate practitioners, brokers, and MLS and Association staff the tools they need to serve their clients.
- This report has been provided to you by a member of the NAR.



About RPR's Data

RPR generates and compiles real estate and other data from a vast array of sources. The data contained in your report includes some or all of the following:

- **Listing data** from our partner MLSs and CIEs, and related calculations, like estimated value for a property or median sales price for a local market.
- **Public records data** including tax, assessment, and deed information. Foreclosure and distressed data from public records and RealtyTrac.
- **Market conditions and forecasts** based on listing and public records data.
- **Census and employment data** from the U.S. Census and the U.S. Bureau of Labor Statistics.
- **Demographics and trends data** from Esri. The data in commercial and economic reports includes Tapestry Segmentation, which classifies U.S. residential neighborhoods into unique market segments based on socioeconomic and demographic characteristics.
- **Business data** including consumer expenditures, commercial market potential, retail marketplace, SIC and NAICS business information, and banking potential data from Esri.
- **School data and reviews** from Niche.
- **Specialty data sets** such as walkability scores, traffic counts and flood zones.



Update Frequency

- Listings and public records data are updated on a continuous basis.
- Charts and statistics calculated from listing and public records data are refreshed monthly.
- Other data sets range from daily to annual updates.

Learn more

For more information about RPR, please visit RPR's public website: <http://blog.narrpr.com>

